



TITAN DF C-UAS™

DF TRIPOD: MOUNTING & CABLES

PROPRIETARY | NOT FOR GENERAL DISTRIBUTION

2022

3 HANG DEVICES ON TRIPOD

- Match all hardware components to their tripod labels
- Connect Titan antennas **BEFORE** mounting them
- DF Antennas & Ports are the same; any antenna = any port
- Attach velcro strap around both Titans to stabilize units



NOTE: mount devices from **bottom to top** for tripod stability

4 CONNECTIONS

POWER & NETWORK BOX

Ethernet
(4 cables)



AC Outlets (x5)

- Titan Power Supplies (x2)
- DF Sensor
- Secure Data Link
- Titan Tablet (charging)

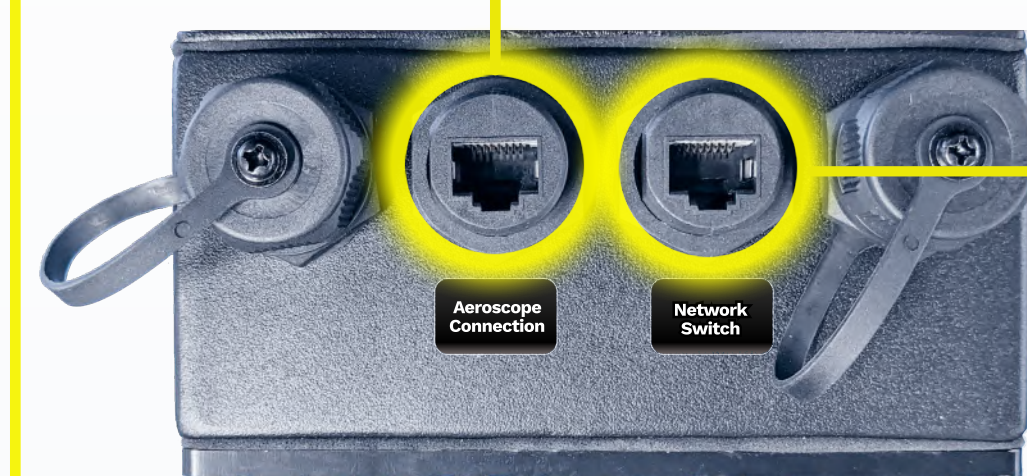
Main Power In

Plug in AC source **LAST**



Power Switch
and dual 15A Fuses

Port Labeled
Network Switch

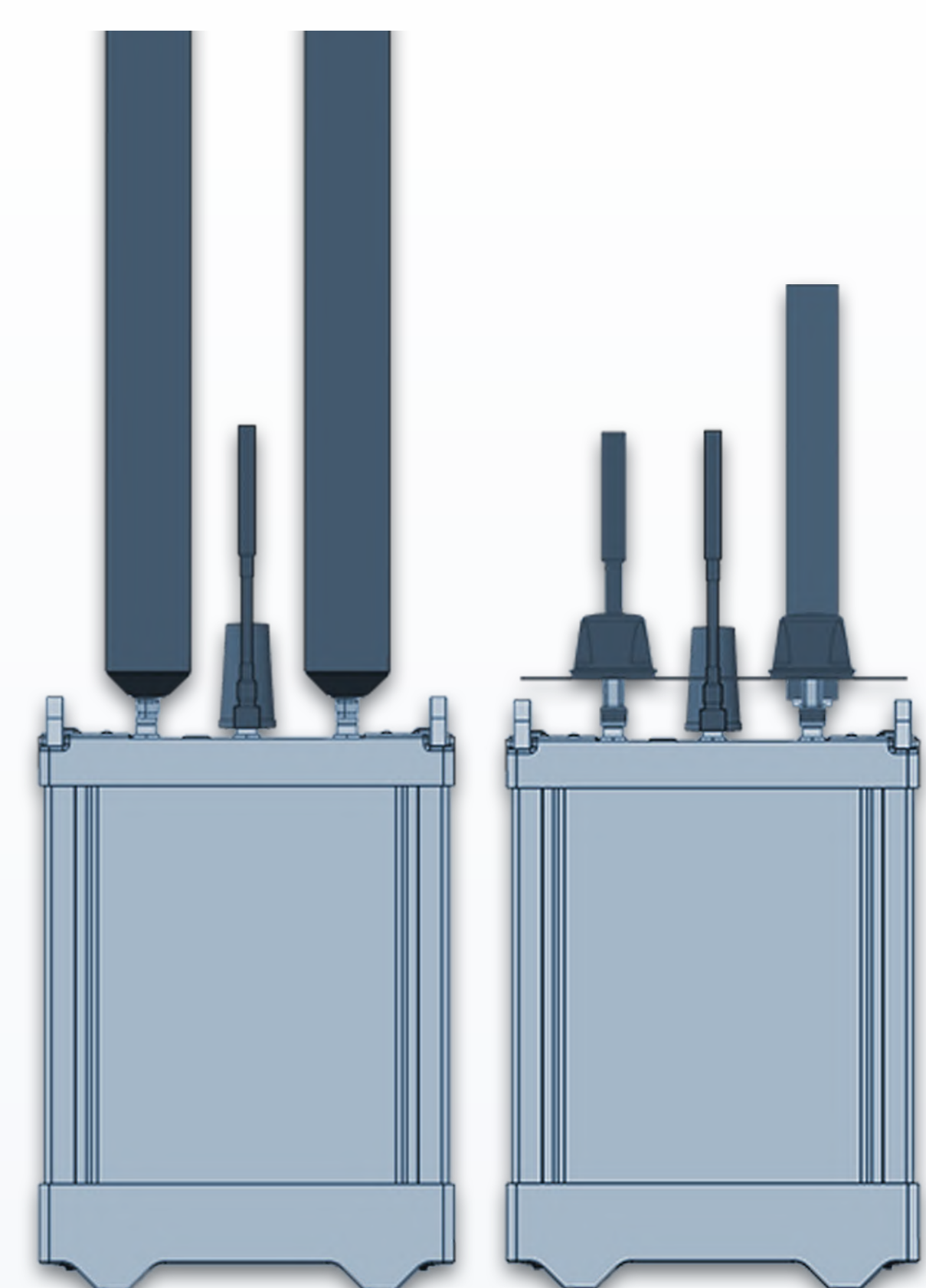


Secure Data Link

Port Labeled
Aeroscope
Connection



DF Sensor



Titans



Titan Tablet

5 FINAL ASSEMBLY

Most components have matching colored labels and mounts; ensure each device is seated fully in its corresponding spot.

VISUAL CHECK

- Inspect tripod to ensure all parts are securely mounted & balanced
- Ensure Titan antennas are correct
- Place sandbags if available

SUPPLY POWER

Plug the power box cable into an AC outlet and flip box switch to ON position (I)

Titans automatically power on

* The DF sensor has 4 antenna ports and antennas, all identical and interchangeable.

Your kit comes with two short (1 ft) and two long (3 ft) antenna cables. The short cables connect to the DF sensor TOP ports, and the longer to the BOTTOM.

